

**NEW
PRODUCT**



GRADE 316 STAINLESS LASHING RING SERIES

*Industrial Strength Lashing Rings Designed for Safe
Transport of Cargo, Suitable for One-Handed Attachment*

RING TYPES

Choose from
2 ring types;
Standard D-Ring
Shape or Bent
D-Ring Shape.

MARKINGS

Lashing Ring Bodies are permanently
marked with size range 1/2" – 1".

MOUNTING OPTIONS

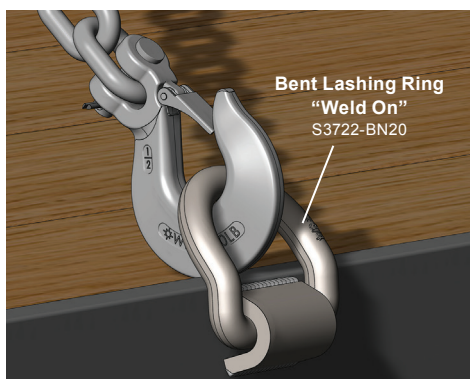
Choose from 2 mounting options;
Bolt-On Mounting Base or Weld-On
Mounting Base.

VERSATILITY

Variety of ring sizes, types, mounting
options, and working load limits to meet
the requirements of many applications.

FORGED 316 STAINLESS

Rings are forged for strength and
components are made from 316
stainless steel for added durability
in harsh environments.



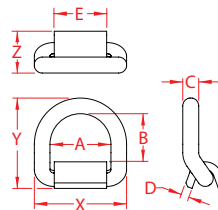
Application image showing the Bent Lashing Ring
"Weld On" in use on flatbed trailer.

Suncor Stainless® Lashing Ring Series

- New Bent D-Rings are angled and extend beyond the surface. They are designed to enable the user to attach lashing fittings to the ring without having to lift the ring first, which allows one-handed attachment.
- Bent D-Rings are an expansion of Suncor's standard D-Ring Shape product line series.
- Made from marine grade 316 stainless steel which wears extremely well, is tarnish-resistant, features low oxidation rates, and is resistant to corrosion when exposed to harsh environments.
- They are suitable for demanding tie-down applications as long as the specified working load limits (WLLs) are strictly adhered to. The WLLs for the series range from 3,000 lbs. to 8,500 lbs. (1,361 kg – 3,856 kg).
- Ideal for cargo applications such as overseas container shipments or long-haul trailering equipment cross country.

LASHING RING, BENT - "WELD-ON"

316 STAINLESS STEEL



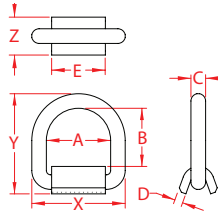
NEW PRODUCT

ITEM	SIZE	A	B	C	D	E	X (height)	Y (length)	Z (width)	WLL (lb)	WT (lb)
S3722-BN13	1/2"	2.34"	1.95"	0.52"	0.30"	1.96"	3.38"	3.47"	1.38"	*3,000	1.00
S3722-BN16	5/8"	2.94"	2.35"	0.70"	0.38"	2.56"	4.34"	4.28"	1.75"	*4,500	2.20
S3722-BN20	3/4"	2.98"	2.35"	0.76"	0.38"	2.56"	4.51"	4.41"	1.89"	*6,500	2.56
S3722-BN25	1"	3.00"	2.25"	1.02"	0.52"	2.56"	5.03"	4.85"	2.14"	*8,500	4.59

***WORKING LOAD LIMIT DEPENDS ON THE QUALITY OF THE WELD ATTACHING THE BASE.**

LASHING RING - "WELD-ON"

316 STAINLESS STEEL

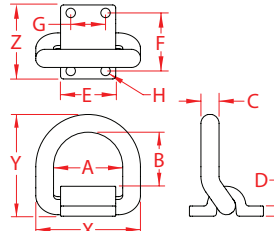


ITEM	A	B	C (size)	D	E	X (height)	Y (length)	Z (width)	WLL (lb)	WT (lb)
S3722-0013	2.35"	2.05"	1/2"	0.30"	1.96"	3.43"	3.65"	1.38"	*3,000	1.00
S3722-0016	2.94"	2.55"	5/8"	0.38"	2.56"	4.30"	4.48"	1.75"	*4,500	2.18
S3722-0020	2.98"	2.58"	3/4"	0.38"	2.56"	4.47"	4.63"	1.89"	*6,500	2.53
S3722-0025	3.00"	2.52"	1"	0.52"	2.56"	5.00"	5.14"	2.14"	*8,500	4.47

***WORKING LOAD LIMIT DEPENDS ON THE QUALITY OF THE WELD ATTACHING THE BASE.**

LASHING RING, BENT - "BOLT-ON"

316 STAINLESS STEEL

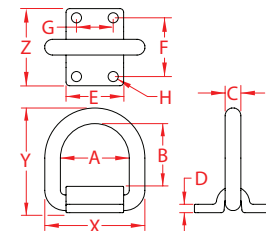


NEW PRODUCT

ITEM	SIZE	A	B	C	D	E	F	G	H	X (height)	Y (length)	Z (width)	WLL (lb)	WT (lb)
S3723-BN13	1/2"	2.34"	1.97"	0.52"	0.28"	1.95"	2.00"	1.25"	0.34"	3.38"	3.38"	2.63"	3,000	1.16
S3723-BN16	5/8"	2.94"	2.41"	0.70"	0.33"	2.38"	2.10"	1.50"	0.41"	4.34"	4.21"	2.75"	4,500	2.25
S3723-BN20	3/4"	2.98"	2.33"	0.76"	0.45"	2.38"	2.53"	1.50"	0.41"	4.51"	4.38"	3.19"	6,500	3.00
S3723-BN25	1"	3.00"	2.28"	1.02"	0.50"	2.50"	3.25"	1.50"	0.53"	5.03"	4.92"	4.25"	8,500	5.27

LASHING RING - "BOLT-ON"

316 STAINLESS STEEL



ITEM	A	B	C (size)	D	E	F	G	H	X (height)	Y (length)	Z (width)	WLL (lb)	WT (lb)
S3723-0013	2.35"	2.14"	1/2"	0.28"	1.95"	2.00"	1.25"	0.34"	3.45"	3.56"	2.53"	3,000	1.18
S3723-0016	2.94"	2.61"	5/8"	0.33"	2.38"	2.12"	1.50"	0.41"	4.31"	4.42"	2.75"	4,500	2.25
S3723-0020	2.98"	2.58"	3/4"	0.45"	2.38"	2.50"	1.50"	0.41"	4.48"	4.56"	3.19"	6,500	3.00
S3723-0025	3.00"	2.52"	1"	0.50"	2.50"	3.25"	1.50"	0.53"	5.03"	5.17"	4.25"	8,500	5.18

NOTE: ALL DIMENSIONS ARE NOMINAL (+/- 3%) AND ARE SUBJECT TO CHANGE WITHOUT NOTICE.